



Train Chair Test Equipment



This Test Tool is used to perform compressive tests on several train seat positions. The position of the chair being tested includes the back position, the position of the armrest, the position of the sitting dummy, and the position of the cushion.

Evaluation / tightening standards are as follows:

1. APTA PR-CS-016-99
2. BS EN 12663-1-2010 + A1-2014
3. UIC 567

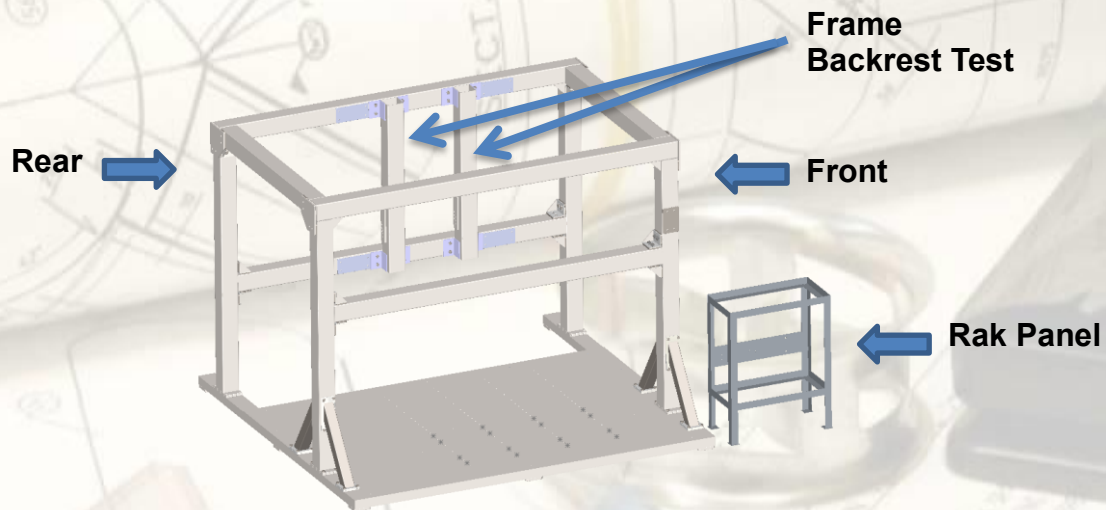
The testing process, the first is selects the amount of cycle time, the second loads the parameters, and the third checks the actual load.



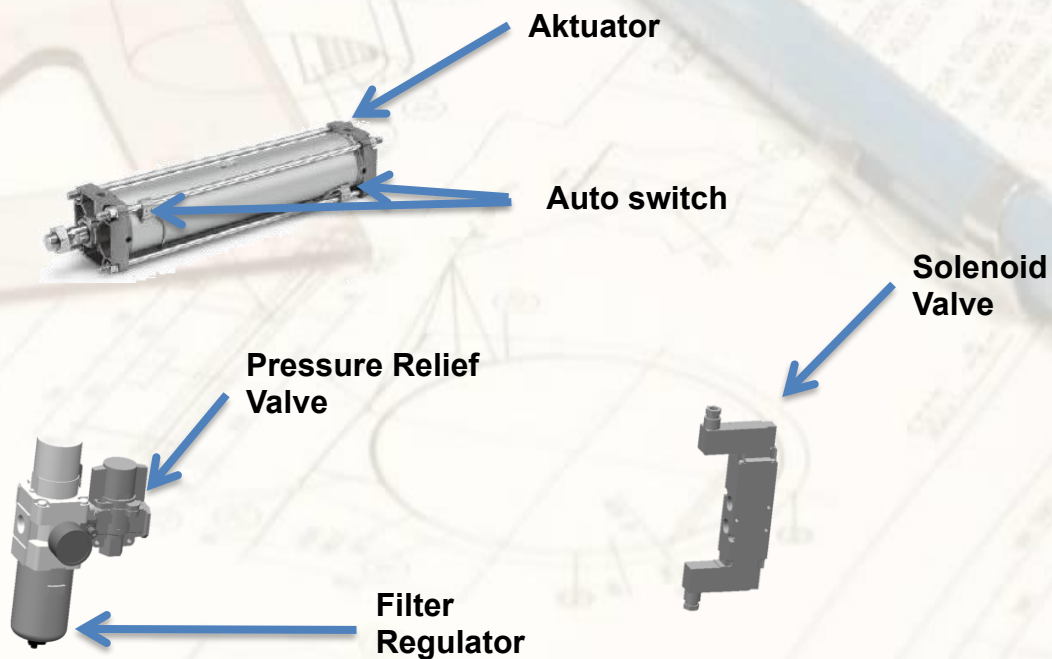
Train Chair Test Equipment

We design test equipment according to customers' **expectations & needs**. There are 5 main components of this test equipment, which are shown as follows:

1. Frame



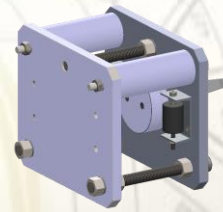
2. Pneumatic Components



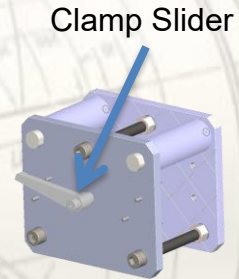


3. Mechanical Components

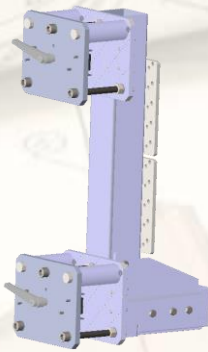
- 1) Frame Armrest Horizontal.
- 2) Frame Vertikal & Cushion Test.
- 3) Frame Dummy duduk.
- 4) Slider System.
- 5) Clamping Unit.
- 6) Fixture.



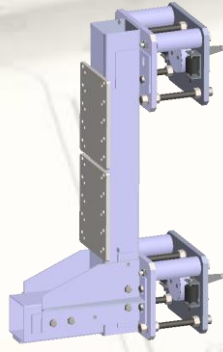
Picture 4



Picture 1.a



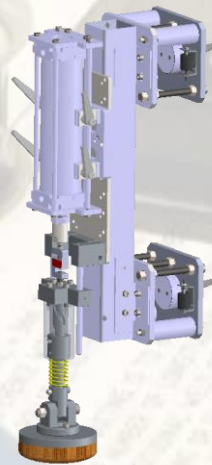
Picture 1.a



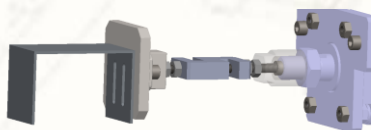
Picture 1.b



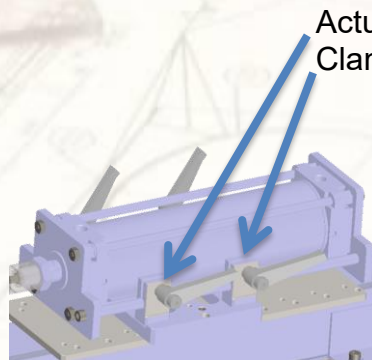
Picture 2



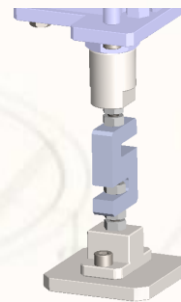
Picture 3



Picture 6.a



Picture 5.a



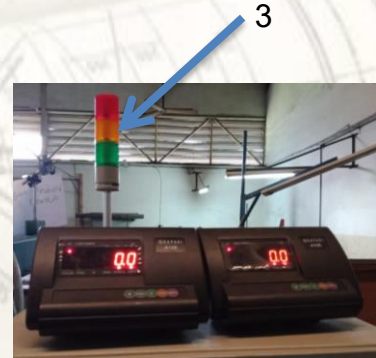
Picture 6.b



Picture 6.c



3. Control Panel



Load cell module

Explanation of Image:

1. Button of On (Green) & Off (Red)
2. Reset Button
3. Process indicator light (Yellow = On process)



4. HMI (Human Machine Interface)



Automatic



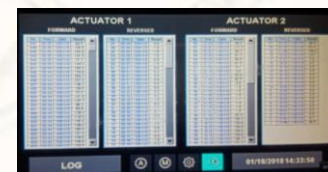
Manual



Main Menu



Setting



Log